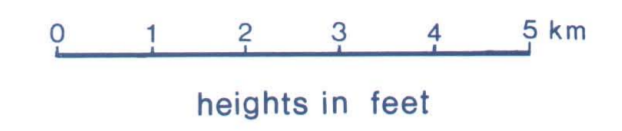


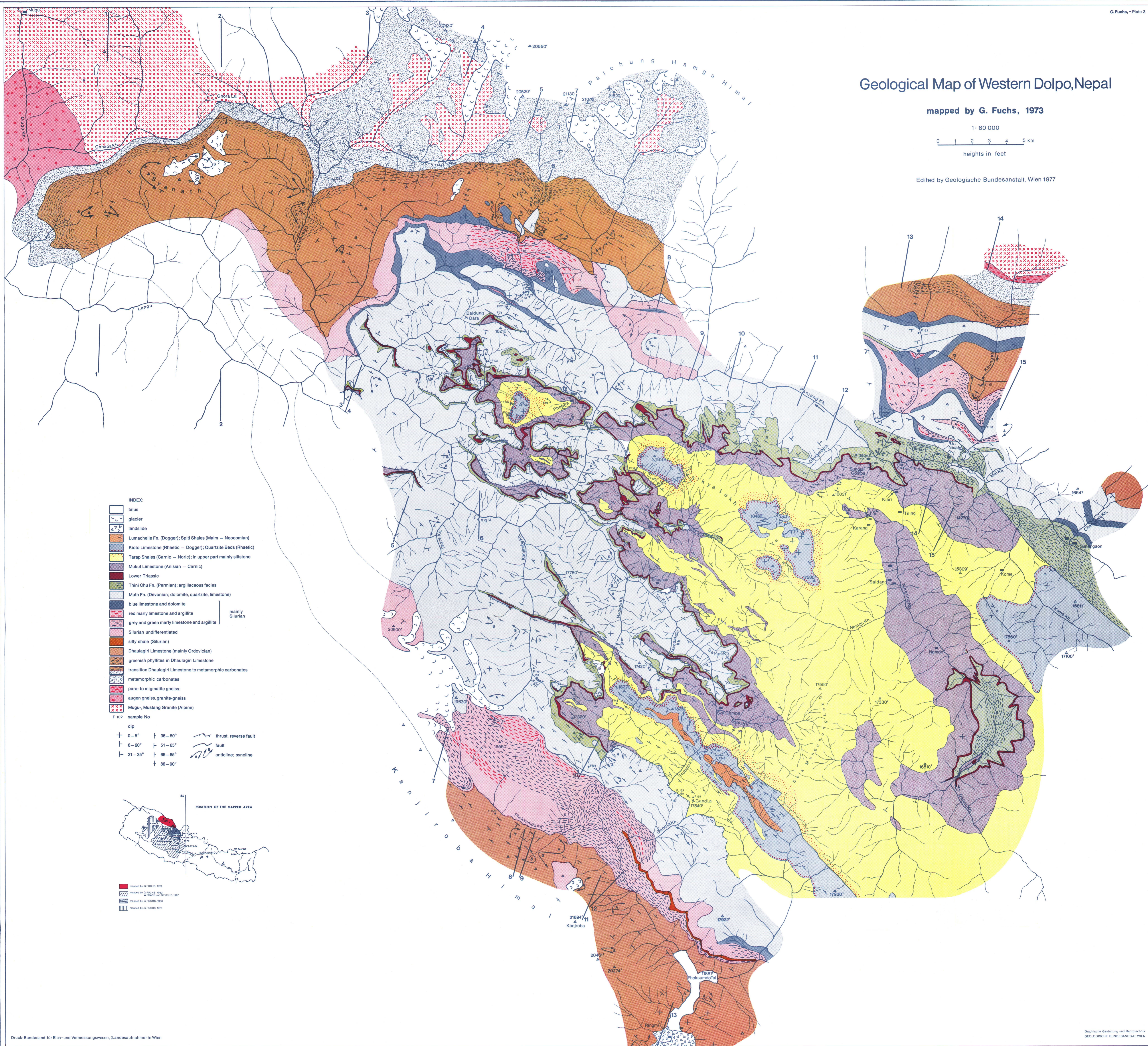
Geological Map of Western Dolpo, Nepal

mapped by G. Fuchs, 1973

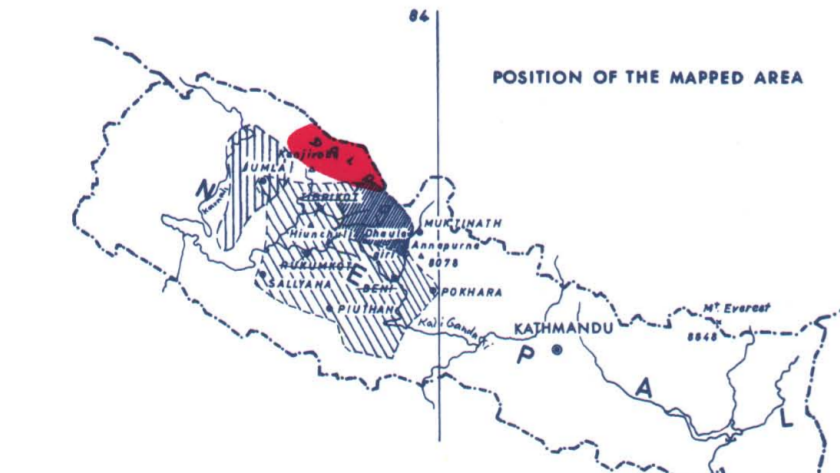
1: 80 000



Edited by Geologische Bundesanstalt, Wien 1977



- INDEX:**
- talus
 - glacier
 - landslide
 - Lumachelle Fn. (Dogger); Spiti Shales (Malm - Neocomian)
 - Kioto Limestone (Rhaetic - Dogger); Quartzite Beds (Rhaetic)
 - Tarap Shales (Carnic - Noric); in upper part mainly siltstone
 - Mukut Limestone (Anisian - Carnic)
 - Lower Triassic
 - Thini Chu Fn. (Permian); argillaceous facies
 - Muth Fn. (Devonian); dolomite, quartzite, limestone
 - blue limestone and dolomite
 - red marly limestone and argillite
 - grey and green marly limestone and argillite
 - Silurian undifferentiated
 - silty shale (Silurian)
 - Dhaulagiri Limestone (mainly Ordovician)
 - greenish phyllites in Dhaulagiri Limestone
 - transition Dhaulagiri Limestone to metamorphic carbonates
 - metamorphic carbonates
 - para- to migmatite gneiss; augen gneiss, granite-gneiss
 - Mugu-, Mustang Granite (Alpine)
 - sample No. F 109
- dip**
- | | | | | | |
|--|--------|--|--------|--|-----------------------|
| | 0-5° | | 36-50° | | thrust, reverse fault |
| | 6-20° | | 51-65° | | fault |
| | 21-35° | | 66-85° | | anticline; syncline |
| | 86-90° | | | | |



- mapped by G. FUCHS, 1973
- mapped by G. FUCHS, 1962; by FUCHS and FUCHS, 1967
- mapped by G. FUCHS, 1963
- mapped by G. FUCHS, 1973